

## 16-Device USB Mobile Charging Cabinet for VR Headsets – Horizontal

- The Lyte 16 Double Door VR USB Mobile charges 16 VR headsets.
- Equivalent to 32 x 12W USB A Charging Ports saving you space and power consumption, replacing extension cables and power sockets with one cable into the wall.
- It is fast and flexible with simultaneous charging and a programmable timer.
- With individual device compartments that store devices horizontally within a compact footprint.
- Two additional top shelves available to store laptops.
- The fast charging ensures devices are ready to go when you need them.
- Provides maximum security & safety with a dual point locking system and separate lockable power compartment.
- It has silent charging with a unique ventilation system and a built-in heat sensor.
- With Support for Life with Lifetime Warranty (5 years electrical), shipped fully assembled.



|                          | Code/SKU          | Number of devices can hold | Unit Dimensions                               | Device Compartment Size                    |
|--------------------------|-------------------|----------------------------|---|--|
| <b>Lyte 16 DDVRUSBMB</b> | LYTE16DDVRUSBMBBL | 16                         | W1087 x D560 x H984 mm<br>42.8" x 22" x 38.7" | W223 x D300 x H178 mm<br>8.8" x 11.8" x 7" |

**IMPORTANT NOTE: CHECK ACTUAL DEVICE SIZE, INCLUDING POWER CABLE FOR COMPATIBILITY WITH DEVICE COMPARTMENT SIZE. IF IN DOUBT PLEASE CONTACT LAPCABBY FOR CONFIRMATION**

|                        |   |  |  |  |
|------------------------|---|--|--|--|
| Materials              | 18mm MFC and 12mm MDF   |  |  |  |
| Safety                 | <p>All products are tested to the highest standard</p> <p>Europe: EN 62368-1:2014</p> <p>Safety testing is a high priority to LapCabby. We don't release any products unless the unit has been completely certified including electrics, materials, construction and components. Leading safety testing house we test the normal operating conditions of the product but also for faults, misuse, temperature, fire risk, electric shock and injury</p> |  |  |  |
| Testing certifications | Safety tested to the highest level  |  |  |  |

|         |                    |             |     |             |        |                  |        |        |                   |                   |
|---------|--------------------|-------------|-----|-------------|--------|------------------|--------|--------|-------------------|-------------------|
|         |                    |             |     |             |        |                  |        |        |                   |                   |
| Devices | Horizontal Storage | VR Headsets | USB | Charge Only | Mobile | Safety Certified | Secure | Robust | Smaller Footprint | Lifetime Warranty |



Inset door handles.



Lock supplied with 6 plate lever activation system.



Strong MFC cladding.

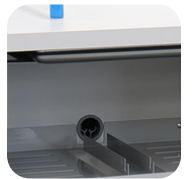
Easy grip handles make it easy to manoeuvre.



1.2mm grey steel fixed shelves with ventilations.



Two additional top shelves to store laptops.



Large doors open wide.



Well placed air vents to the rear and base.



Non-marking hospital grade rubber wheels.



IEC power cable into the mains.



16 x USB-A charging hubs.

