

16-Device USB C Mobile Charging Cabinet for VR Headsets – Horizontal

- The Lyte 16 Double Door VR USB C Mobile charges 16 VR headsets.
- Equivalent to 32 x 12W USB C Charging Ports saving you space and power consumption, replacing extension cables and power sockets with one cable into the wall.
- It is fast and flexible with simultaneous charging and a programmable timer.
- With individual device compartments that store devices horizontally within a compact footprint.
- Two additional top shelves available to store laptops.
- The fast charging ensures devices are ready to go when you need them.
- Provides maximum security & safety with a dual point locking system and separate lockable power compartment.
- It has silent charging with a unique ventilation system and a built-in heat sensor.
- With Support for Life with Lifetime Warranty (5 years electrical), shipped fully assembled.



	Code/SKU	Number of devices can hold	Unit Dimensions	Device Compartment Size
Lyte 16 DDVRUSBCMB	LYTE16DDVRUSBCMBBL	16	W1087 x D560 x H984 mm 42.8" x 22" x 38.7"	W223 x D300 x H178 mm 8.8" x 11.8" x 7"

IMPORTANT NOTE: CHECK ACTUAL DEVICE SIZE, INCLUDING POWER CABLE FOR COMPATIBILITY WITH DEVICE COMPARTMENT SIZE. IF IN DOUBT PLEASE CONTACT LAPCABBY FOR CONFIRMATION

Materials	18mm MFC and 12mm MDF		
Safety	<p>All products are tested to the highest standard</p> <p>Europe: EN 62368-1:2014</p> <p>Safety testing is a high priority to LapCabby. We don't release any products unless the unit has been completely certified including electrics, materials, construction and components. Leading safety testing house we test the normal operating conditions of the product but also for faults, misuse, temperature, fire risk, electric shock and injury</p>		
Testing certifications	Safety tested to the highest level		

Devices	Horizontal Storage	VR Headsets	USB	Charge Only	Mobile	Safety Certified	Secure	Robust	Smaller Footprint	Lifetime Warranty



Inset door handles.



Lock supplied with 6 plate lever activation system.



Strong MFC cladding.

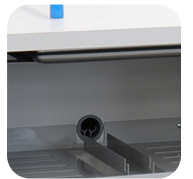
Easy grip handles make it easy to manoeuvre.



1.2mm grey steel fixed shelves with ventilations.



Two additional top shelves to store laptops.



Well placed air vents to the rear and base.

Large doors open wide.



IEC power cable into the mains.



Non-marking hospital grade rubber wheels.



16 x USB-C charging hubs.

